

CONTRACT SERIES TWO

Medium Open Roller Shade

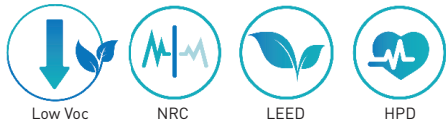
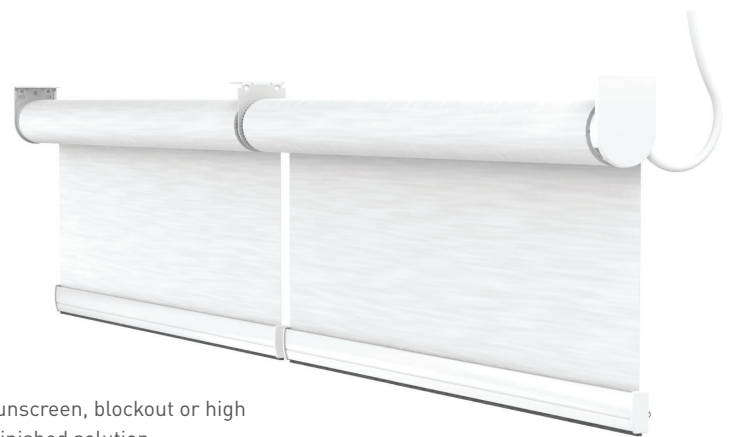
Line Voltage 120V AC Motorized Control



The precision engineered Rollease Acmeda Contract Series Two Medium Open Roll system is a durable and robust combination of form and function in a sleek package. This precision engineered system, integrates a powerful, yet quiet motor, directly in the tubing of the roller which is powered through plug in transformer or hardwired by an EC with connector plug. With a max width of 120" (based on a 120" drop) up to 92 sqf. before linking options. Featuring minimal light gaps, this properly balanced precision system will last a lifetime with reduce service calls /issues. Significantly heavier and impressive shading systems require precision engineered, heavy duty hardware, that can support multiples of its own weight.

Features:

- With a max width of 110" (based on a 120" drop) up to 92 SqFt. before linking options.
- Linking options include in-line, angled up to 45° and up to 90° coupling.
- Industry leading narrowest equal light gap of 1/2" per side.
- Automate line of line voltage (120V AC) motors from 6Nm to 50Nm for large applications with ultra-quiet operation and ARC bi-directional communication.
- Self-locating installation feature with 10mm idler extension (1mm increments)
- Fabric Spline feature provides positive attachment of fabric to tube.
- Accepts standard and reverse roll applications



Match this solution with any of our sunscreen, blockout or high performance fabrics for a complete finished solution. See our document library for comprehensive information including HPD, LEED & NFPA.

MOTOR OPTIONS

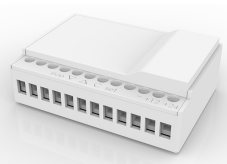
Automate Wall Switches
[Hand held or wall mounts]



Automate ARC Repeater
[Extends the ARC signal]



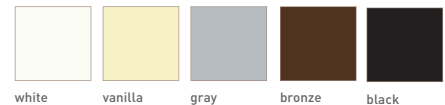
ARC Relay Module
[Smart System Interface]



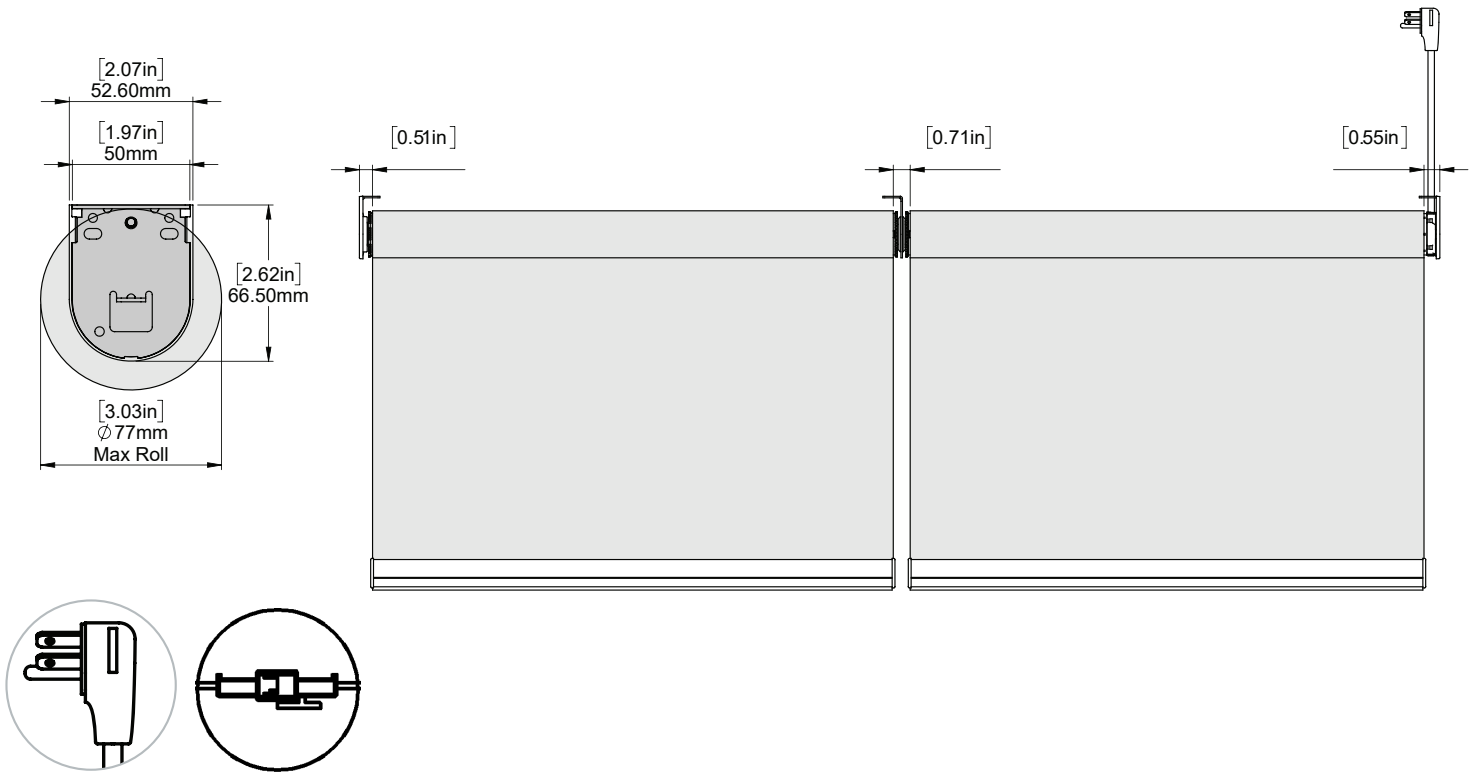
Automate Pulse Hub
[Smart Phone Control]



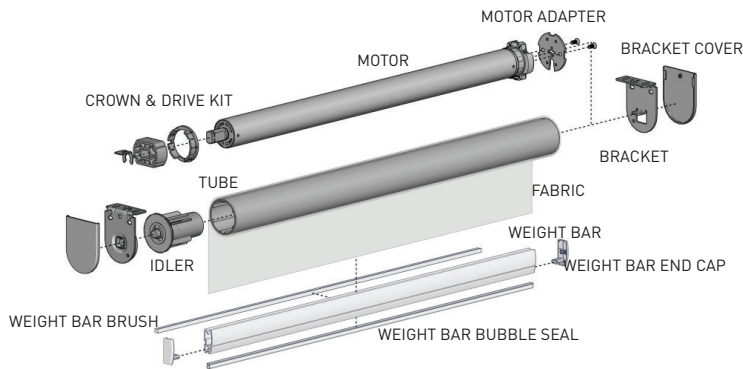
BRACKET COLORS



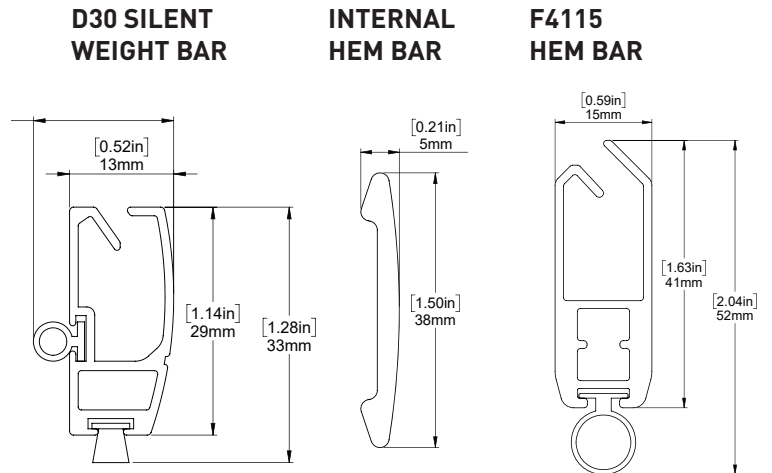
FRONT & SIDE VIEW



SCHEMATIC

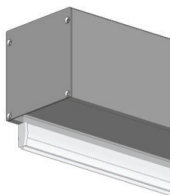


BOTTOM RAIL OPTIONS



SYSTEM UPGRADES

5" Pocket
[for hidden recess mounts]



L & I Clips
[for hidden recess mounts]



Edge Side Channels
[for improved light blackout]



Internal Wire Guide
[supporting complex shading systems]



Fabric Spline System
[secure attachment of fabric on a roller shade]



For more information about our Upgrade solutions, see our UPGRADE SPECIFICATION sheets.