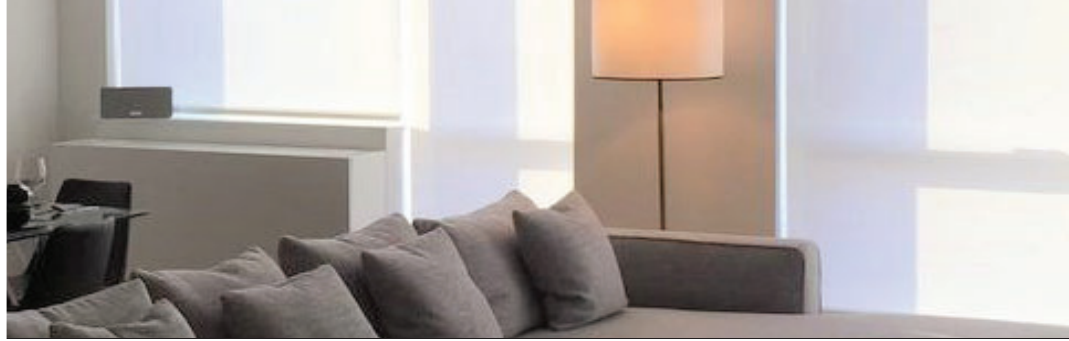


# CONTRACT SERIES TWO

## LARGE OPEN ROLLER SHADES

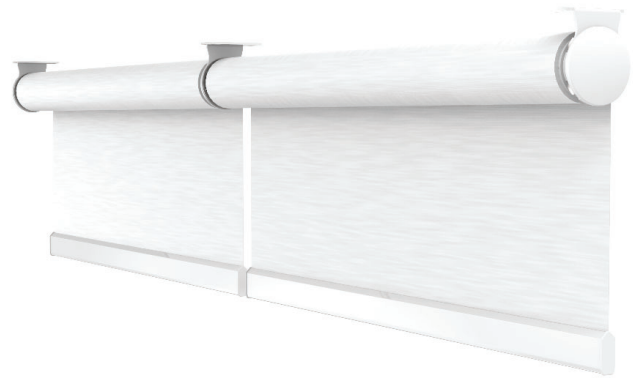
12v Low Voltage / Solar / Li-Ion Motorized Control



With the ability to achieve up to 18' widths and 24' drops, covering a maximum of 220 square feet before linking, the Contract Series Two Large Open Roll System consists of robust hardware and an optional premium aluminum headbox, providing a solution for large size shading systems for a premium aesthetic impact on design and solar control. Significantly heavier and impressive shading systems require precision engineered, heavy duty hardware, that can support multiples of its own weight. Heavy duty steel brackets and locking idler and motor side features provide maximum security for larger applications. The heavy duty in line and angled linking systems allow up to 8 panels to be driven from one motor drive. The perfect solution for internal commercial applications; the Contract Series Two Large Open Roll system creates new opportunities to achieve larger, more impactful shades

### Features:

- Maximum widths up to 18' and maximum drops to 20', with the ability to cover a maximum of 220 square feet before linking.
- Up to 8 panels can be linked and driven from one motor drive.
- Vertical adjustable brackets for easier and more accurate installation
- Locking bearing idler for added security.
- Driven by our Automate Low Voltage line of motors from 2 NM to 10 NM for large applications
- Powering options include low voltage power panel or transformer, or internal Li-ion battery system with solar PV array for trickle charging
- T-Tube Spline Option



Low Voc



NRC



LEED



HPD

Match this solution with any of our sunscre performance fabrics for a complete finished solution. See our document library for comprehensive information including HPD, LEED & NRC specifications.

### BRACKET COLORS



white



gray



black

### MOTOR OPTIONS

**Automate Wall Switches**  
[Hand held or wall mounts]



**DC Power Panel**  
[Provides power for 18 DC ARC motors]



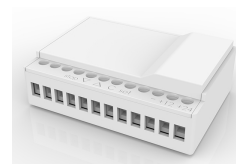
**Automate Solar Charger**  
[energy efficient]



**Automate ARC Repeater**  
[Extends the ARC signal]



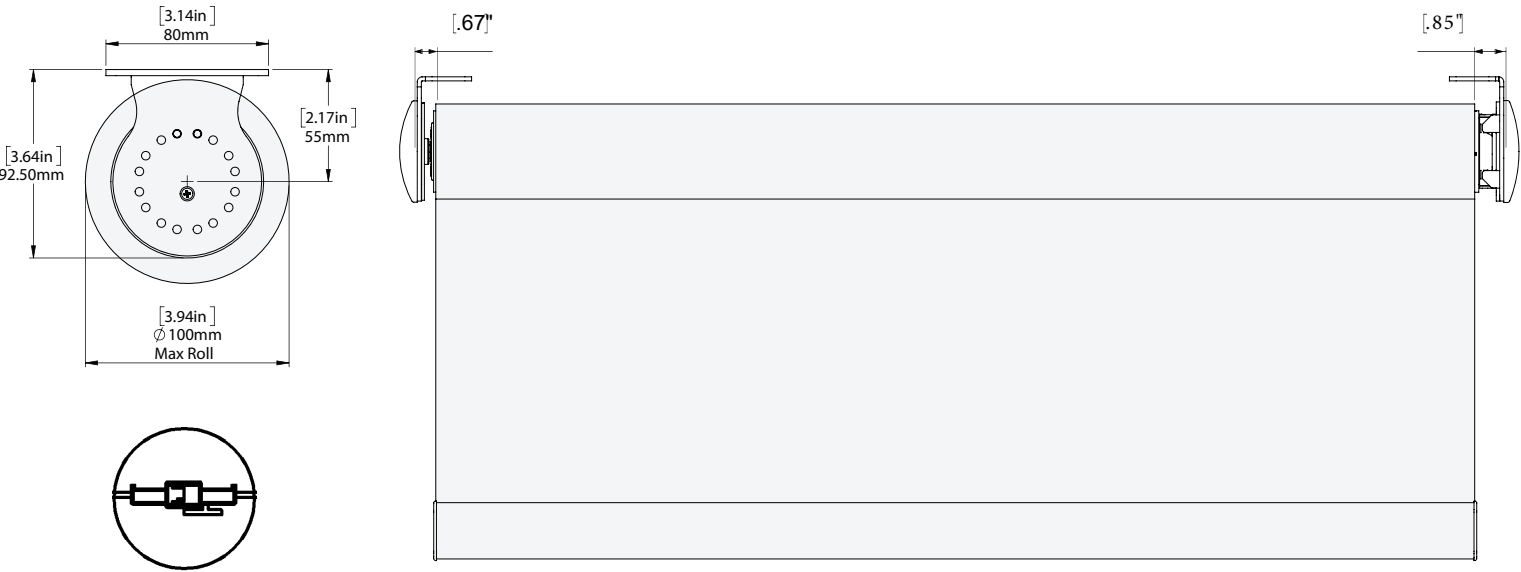
**ARC Relay Module**  
[Smart System Interface]



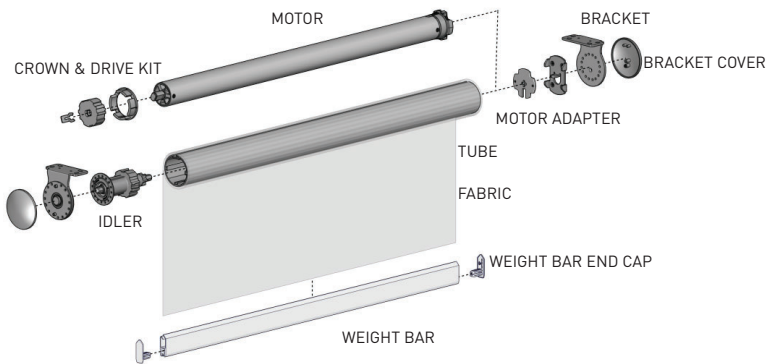
**Automate Pulse Hub**  
[Smart Phone Control]



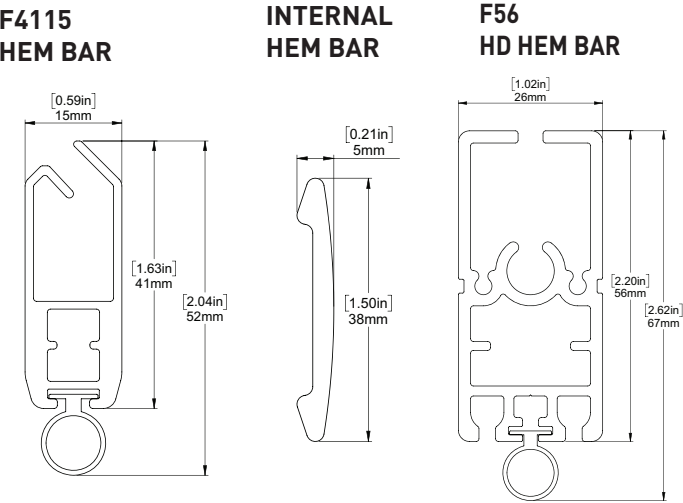
FRONT & SIDE VIEW



SCHEMATIC



BOTTOM RAIL OPTIONS



SYSTEM UPGRADES

<b>5" Pocket</b> [for hidden recess mounts]	<b>Edge Side Channels</b> [for improved light blackout]	<b>Internal Wire Guide</b> [supporting complex shading systems]	<b>Zipscreen Locking Side Guide</b> [supporting complex shading systems]	<b>Fabric Spline System</b> [secure attachment of fabric on a roller shade]

For more information about our Upgrade solutions, see our UPGRADE SPECIFICATION sheets.