

# CONTRACT SERIES SPECIALTY

## SKYLIGHT with ZIP CHANNELS

Wirefree / Low Voltage / 12volt Motorized Control



The Zipscreen Skylight system offers a refined solution for light block out in any horizontal or sloped windows. Using secure zip locking channels, the system achieves perfect tension of fabric in all directions during operation and while stationary. Electronically operated, it's the ultimate system for reducing thermal heat gain, adaptable for both commercial and domestic applications. The Wire Guide Skylight offers a cost effective solution giving flexibility for a wide range of installation scenarios.

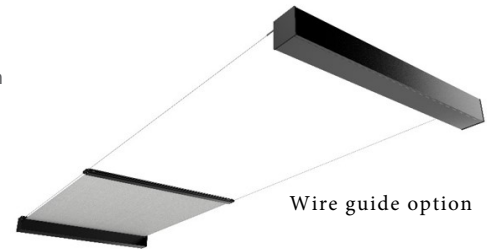
### Features:

- Contemporary square architectural design.
- No visible tape/cord for Zipscreen Skylight.
- Removable front covers for ease of installation and maintenance.
- Zip reducers matched to take up tube diameters, mean less ripples and smoother shade panel finish.
- Versatile system for horizontal or angled applications.
- .060" thick aluminum cover panels in durable powder coat finish.
- Wire guide option utilizes 3.2mm stainless guide cable.
- 28" Minimum width.
- Up to 10' maximum drop x 10' maximum width, with a maximum of 60 sq. ft.

### FINISH COLORS

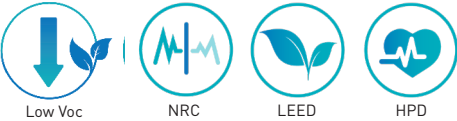


Zipscreen side channels



Wire guide option

Match this solution with any of our sunscreen, blockout or high performance fabrics for a complete finished solution. See our document library for comprehensive information including HPD, LEED & NRC specifications.



### MOTOR OPTIONS

**Automate Solar Charger**  
[energy efficient]



**Automate Pulse Hub**  
[Smart Phone Control]



**Automate ARC Repeater**  
[Extends the ARC signal]



**Automate Wall Switches**  
[Hand held or wall mounts]



**ARC Relay Module**  
[Smart System Interface]

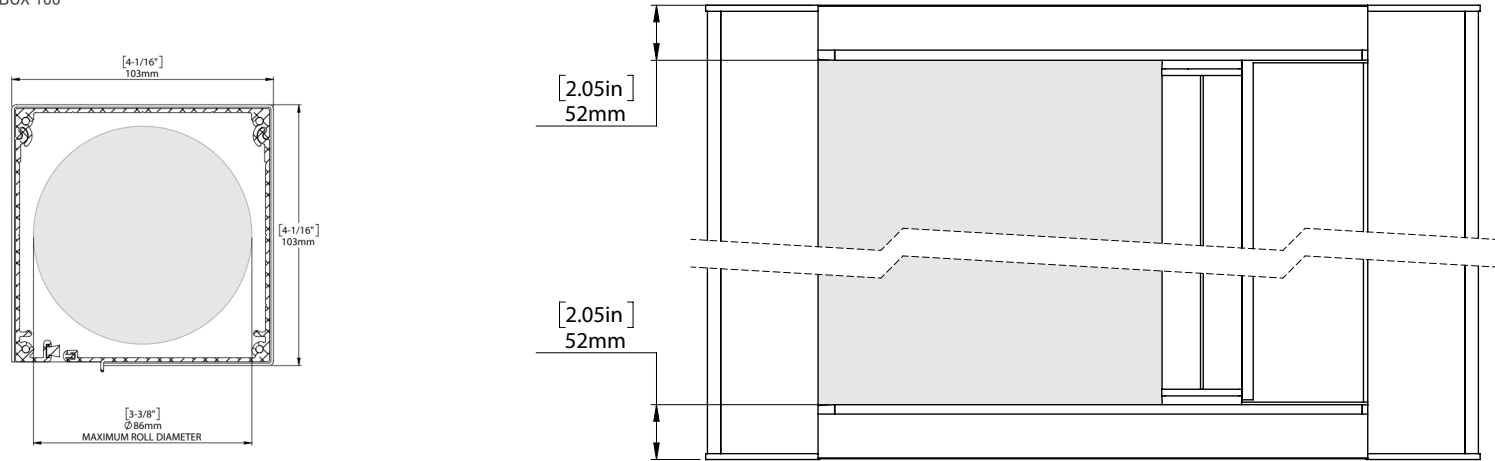


**DC Power Channel**  
[Provides power for 18 DC ARC motors]

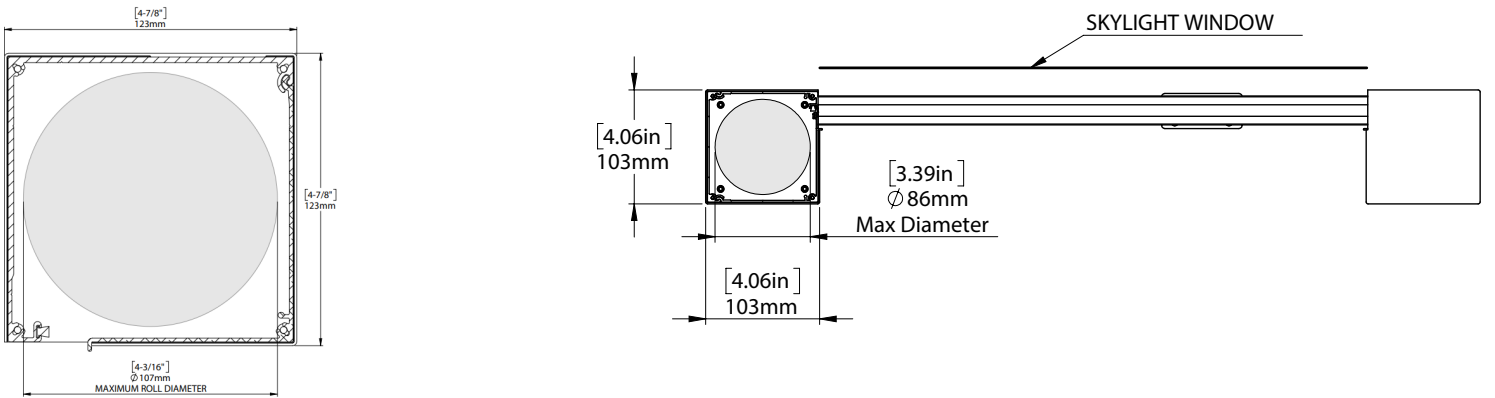


FRONT & SIDE VIEW

BOX 100



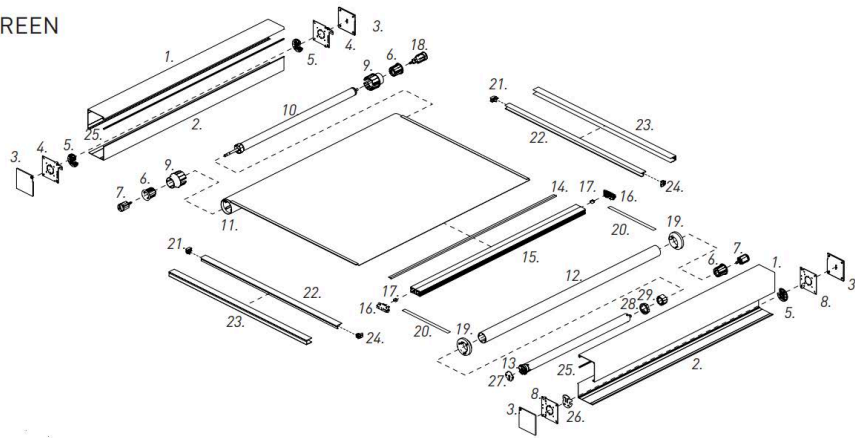
BOX 120



SCHEMATIC

CENTER RAIL

ZIPSCREEN



WIREGUIDE

