

CONTRACT SERIES SPECIALTY

SKYLIGHT with ZIP CHANNELS

Line Voltage / 120volt AC Motorized Control



The Zipscreen Skylight system offers a refined solution for light block out in any horizontal or sloped windows. Using secure zip locking channels, the system achieves perfect tension of fabric in all directions during operation and while stationary. Electronically operated, it's the ultimate system for reducing thermal heat gain, adaptable for both commercial and domestic applications. The Wire Guide Skylight offers a cost effective solution giving flexibility for a wide range of installation scenarios.

Features:

- Contemporary square architectural design.
- No visible tape/cord for Zipscreen Skylight.
- Removable front covers for ease of installation and maintenance.
- Zip reducers matched to take up tube diameters, mean less ripples and smoother shade panel finish.
- Versatile system for horizontal or angled applications.
- .060" thick aluminum cover panels in durable powder coat finish.
- Wire guide option utilizes 3.2mm stainless guide cable.
- 28" Minimum width.
- Up to 10' maximum drop x 10' maximum width, with a maximum of 60 sq. ft.



Low Voc



NRC



LEED



HPD

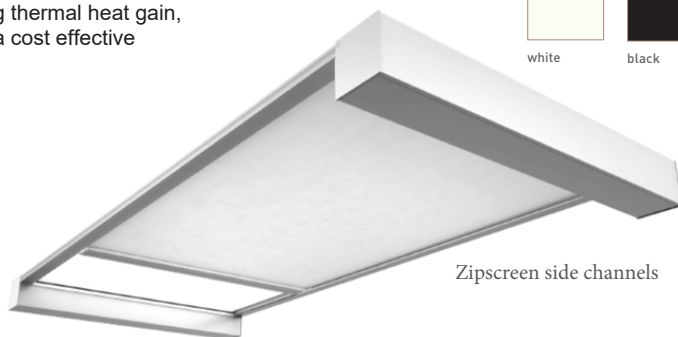
Match this solution with any of our sunscreen, blackout or high performance fabrics for a complete finished solution. See our document library for comprehensive information including HPD, LEED & NRC specifications.

FINISH COLORS

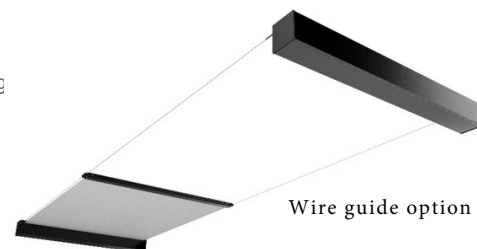


white

black



Zipscreen side channels



Wire guide option

MOTOR OPTIONS

Automate Solar Charger
[energy efficient]

Automate ARC Renaster
[Extends the ARC signal]

Automate Wall Switches
[Hand held or wall mounts]

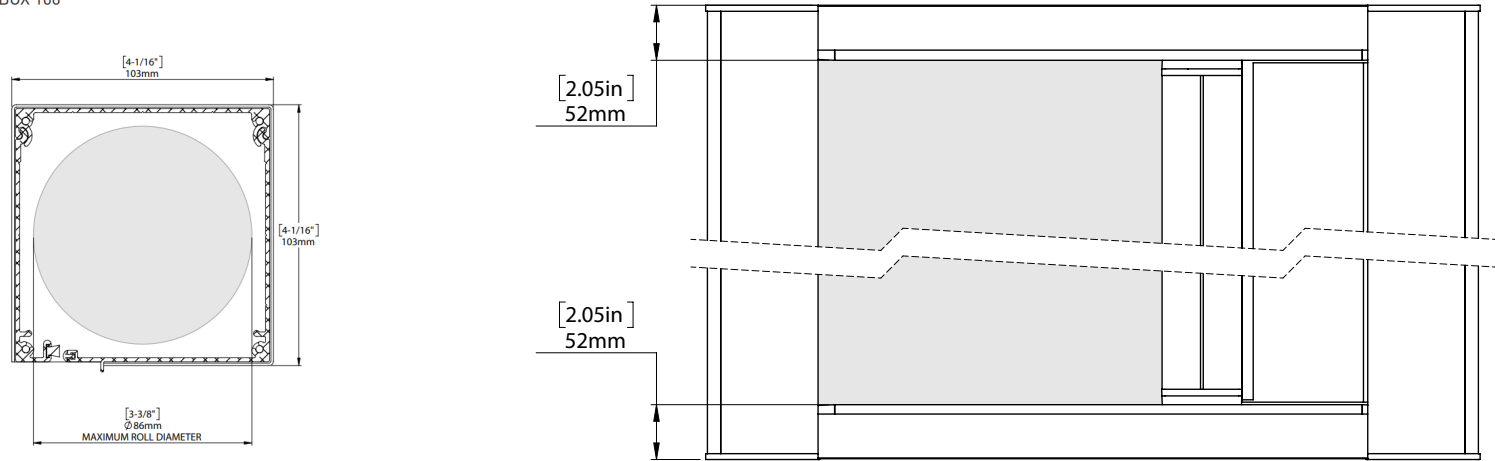
ARC Relay Module
[Smart System Interface]

Automate Pulse Hub
[Smart Phone Control]

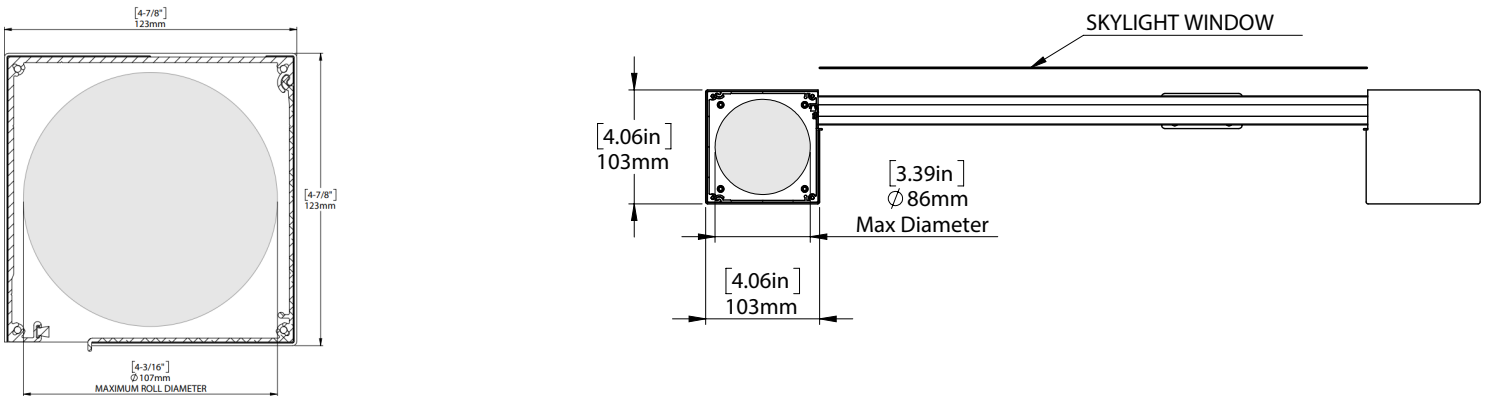


FRONT & SIDE VIEW

BOX 100



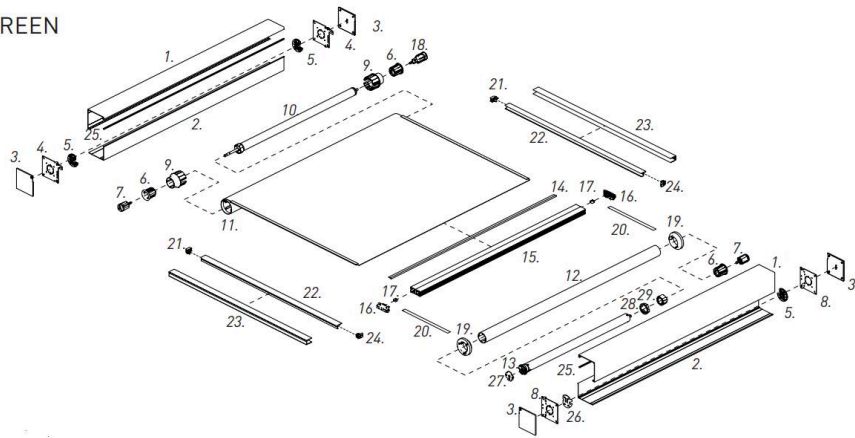
BOX 120



SCHEMATIC

CENTER RAIL

ZIPSCREEN



WIREGUIDE

