

# CONTRACT SERIES ONE

## Medium 4" Fascia Roller Shade

12v Low Voltage / Solar / Li-Ion Motorized Control



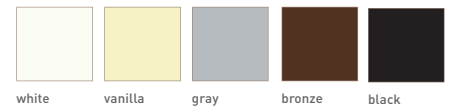
Concealed beneath the contemporary fascia, our low-voltage motorized Contract Series One roller shade, enables all levels of motorization. Retaining a minimal aesthetic, the low-voltage motor is hidden and can become autonomously powered with the addition of a solar panel, providing the ultimate in energy efficiency, and sustainability. Enable view through, privacy and comfort with the precision engineered Contract Series One roller shade.

### Features:

- Advanced bracket offers two way vertical adjustment for precise alignment.
- Commercial grade aluminum fascia is powder coated or anodized for durability.
- Enhances sustainability and efficiency with complete light and thermal control.
- Integrated, ARC™ enabled, battery operated, motorization. Completely wire-free.
- Ultra-quiet operation.
- Stylish single or multi-channel controls & smart device compatibility.
- Single & linked shade applications.
- Leveling control; multiple shades finish in the same position for a premium aesthetic
- Max width of 120" (based on 120" drop) before linking. Capacity to cover areas up to 100 sqft.



### FINISH COLORS



Match this solution with any of our sunscreen, blockout or high performance fabrics for a complete finished solution. See our document library for comprehensive information including HPD, LEED & NRC specifications.

### MOTOR OPTIONS

**Automate Wall Switches**  
[Hand held or wall mounts]

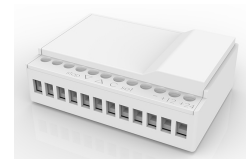
**DC Power Panel**  
[Provides power for 18 DC ARC motors]

**Automate Solar Charger**  
[energy efficient]

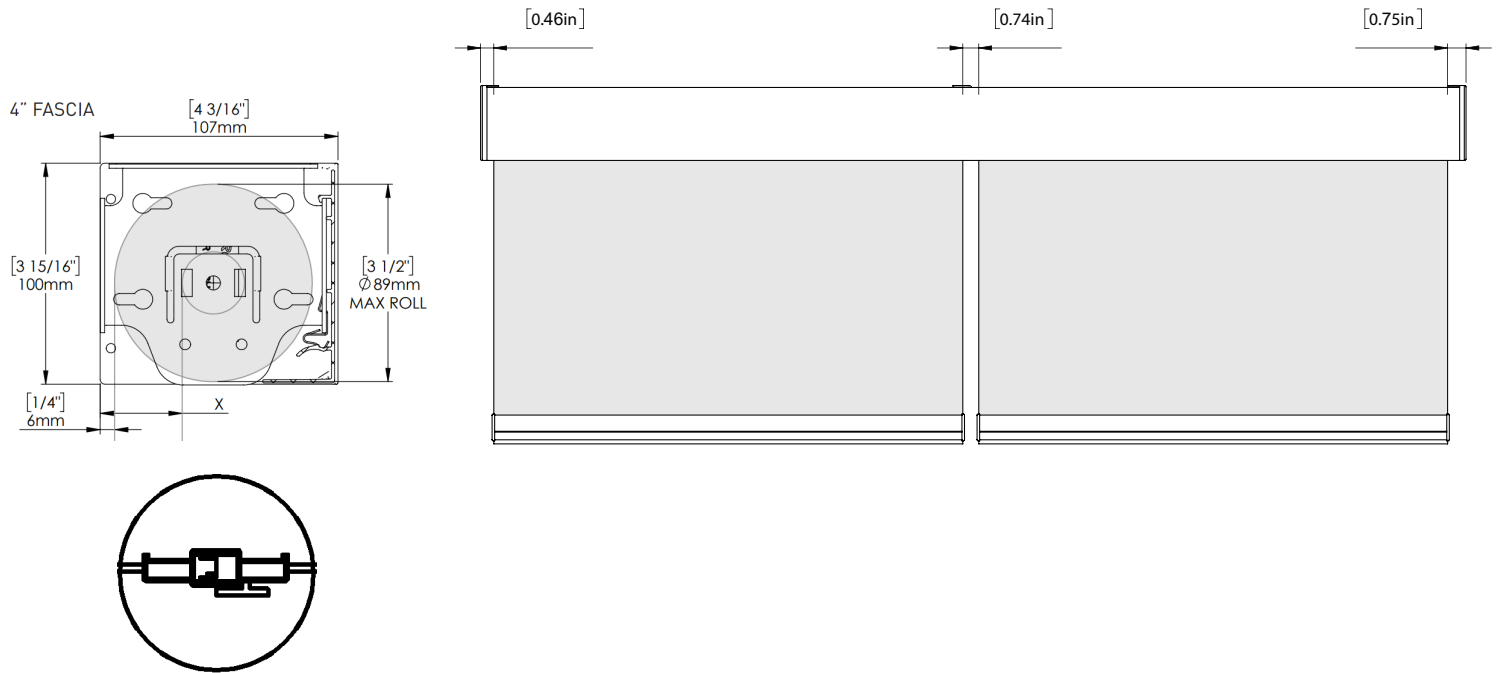
**Automate ARC Repeater**  
[Extends the ARC signal]

**ARC Relay Module**  
[Smart System Interface]

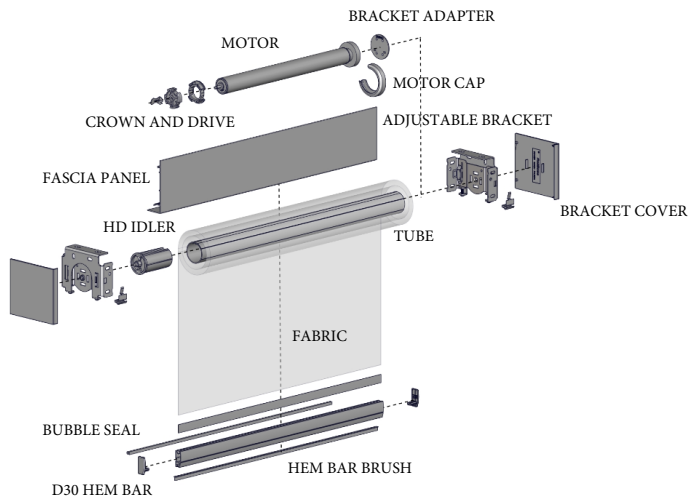
**Automate Pulse Hub**  
[Smart Phone Control]



## FRONT & SIDE VIEW

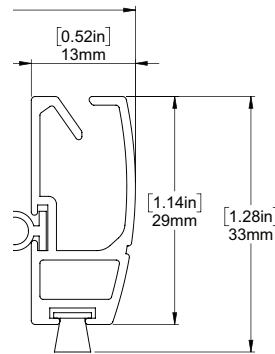


## SCHEMATIC

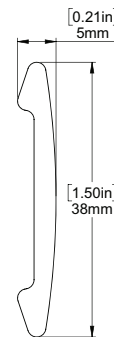


## BOTTOM RAIL OPTIONS

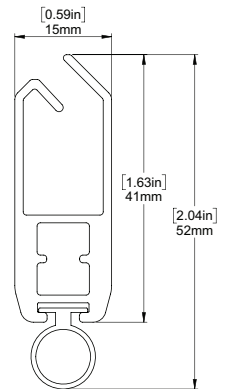
### D30 SILENT WEIGHT BAR



### INTERNAL HEM BAR



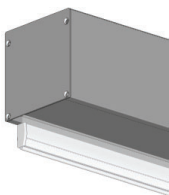
### F4115 HEM BAR



## SYSTEM UPGRADES

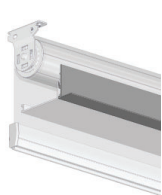
### 5" Pocket

[for hidden recess mounts]



### L & I Clips

[for hidden recess mounts]



### Edge Side Channels

[for improved light blackout]



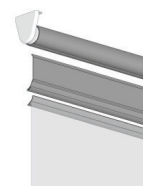
### Internal Wire Guide

[supporting complex shading systems]



### Fabric Switch System

[fast easy changing of fabric on a roller shade]



For more information about our Upgrade solutions, see our UPGRADE SPECIFICATION sheets.