

# TWA Hotel; JFK Airport, Queens, NY



Controlling light levels is key to maintaining our bodies circadian rhythm when traveling. The management of privacy and light was a requirement in the 512 guest rooms of this nostalgic hotel with views of JFK's busy runways and historic TWA Flight Center.

## THE CHALLENGE

The TWA Hotel at JFK International airport is a 200,000 SF historic New York facility that was originally designed in 1962 by architect Eero Saarinen and declared a city landmark in 1994. In winter 2016 the hotel received two new hotel wings to be designed to reflect and defer to the landmark TWA Flight Center. In 2017 Rollease Acmeda Commercial Group worked with Shades by Matiss of Mountainside, NJ and MCR to develop a shading plan within LEED sustainable building requirements for the hotel's 512 guest rooms to meet their vision and address their design challenges – providing traveling guest occupants light management controls of their environment.

Much of the TWA Flight Center's original details, such as the custom ceramic floor tiles and 486 variously shaped window panels, were to be incorporated in the design to inspire a 1960s-era vibe reflective of the flight center's iconic period in history. Brass light fixtures, rotary phones, red carpeted hallways and furniture were some of the details worked into the design, evocative of the original TWA lounge.

Among the design concerns and environmental challenges listed by MCR, the rooms would require modern amenities such as blackout roller shades and multiple-pane soundproof windows. Maximizing privacy and light levels for international guests and realizing energy efficiencies through heat reduction from the windowpanes were top priority of the design challenge.

### **Fabric Selection**

Texstyle Mesa Blackout

### **Lift System**

- Contract Series One Medium Low Voltage Motorized Shading System
- Custom Fascia Panel
- Custom Blackout Side Channel

### **Motor**

Automate Q2 NM Li-ion™

### **Control Unit**

Automate Single Channel Wall Switches

### **Fabricated By**

Shades by Matiss

### **Installed**

County Line

### **Developer**

MCR

### **Lead Architect**

Beyer Blinder Belle

### **Design Architect**

Stonehill Taylor



## THE SOLUTION

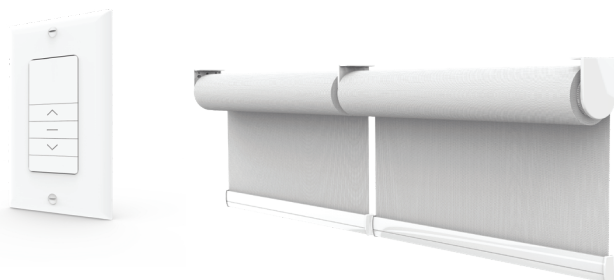
Motorization is the single most effective way to efficiently control large shading systems over several windows. The Automate™ motorization line by Rollease Acmeda was selected for its effectiveness and simplicity in operation. A single gang in-wall keypad permitted control of a bank of windows and afforded a simple, easy-to-use solution for guests to manage light and privacy.

With biophilia in interior architecture on the rise, occupant wellness is an important factor influencing design. There have been many recent studies on the positive effects of sleeping in a dark room. In a recent study published by the American Journal of Epidemiology, they found there is a strong link between mental wellbeing and mood compared to light level exposure. Low exposure to darkness can elicit a negative mood, like low sleep levels.

The shade fabric selection was another prime consideration in the solution to provide the ability to manipulate light exposure at any time of day – the Mesa Blackout Collection by Textstyle was the answer. This blackout fabric delivered on aesthetics; accentuating the interior décor, while blocking out light and adding to the absorption of heat transferring from the exterior.

Paired with the fabric was the Contract Series One Medium Low Voltage Battery Powered Shading System; selected for its industry leading simplicity and versatility. This system allowed for a completely custom finish with accompanying blackout side channels designed in conjunction with Fabrica, curtain wall manufacturer, to add to the light management controls.

To meet budgetary requirements, the Rollease Acmeda Commercial Group collaborated with Shades by Matiss to develop a motor scheme for wire management and to reduce the number of motors used in the project. The Automate Quiet 2 NM Li-ion Motors were selected due to their rechargeable battery capabilities and quiet operation. The Automate Solar Panel plugged directly into the motor served as a trickle charger to assist in recharging and was installed within the shading system for a sleek and discreet finish.



## ROLLEASE ACMEDA CONTRACT

Rollease Acmeda customers can realize the tremendous design and installation flexibility for each project. Utilizing our network of local manufacturing and world-class installation sub-contractors, Rollease Acmeda presents thoughtfully engineered window covering solutions to provide pristine view-throughs, glare control and interior enhancing style on time and under budget.

Visit [rolleaseacmedacontract.com](http://rolleaseacmedacontract.com)